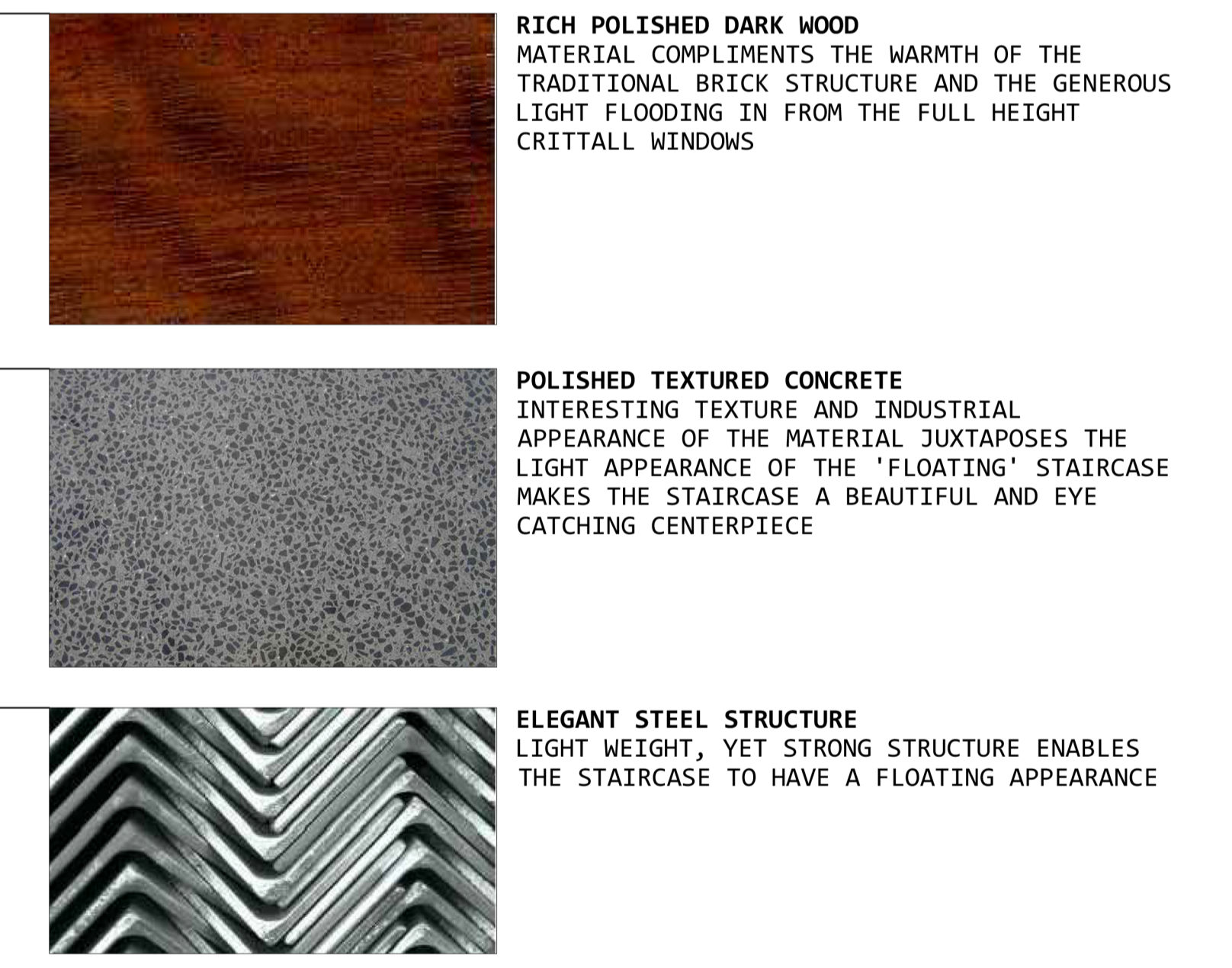
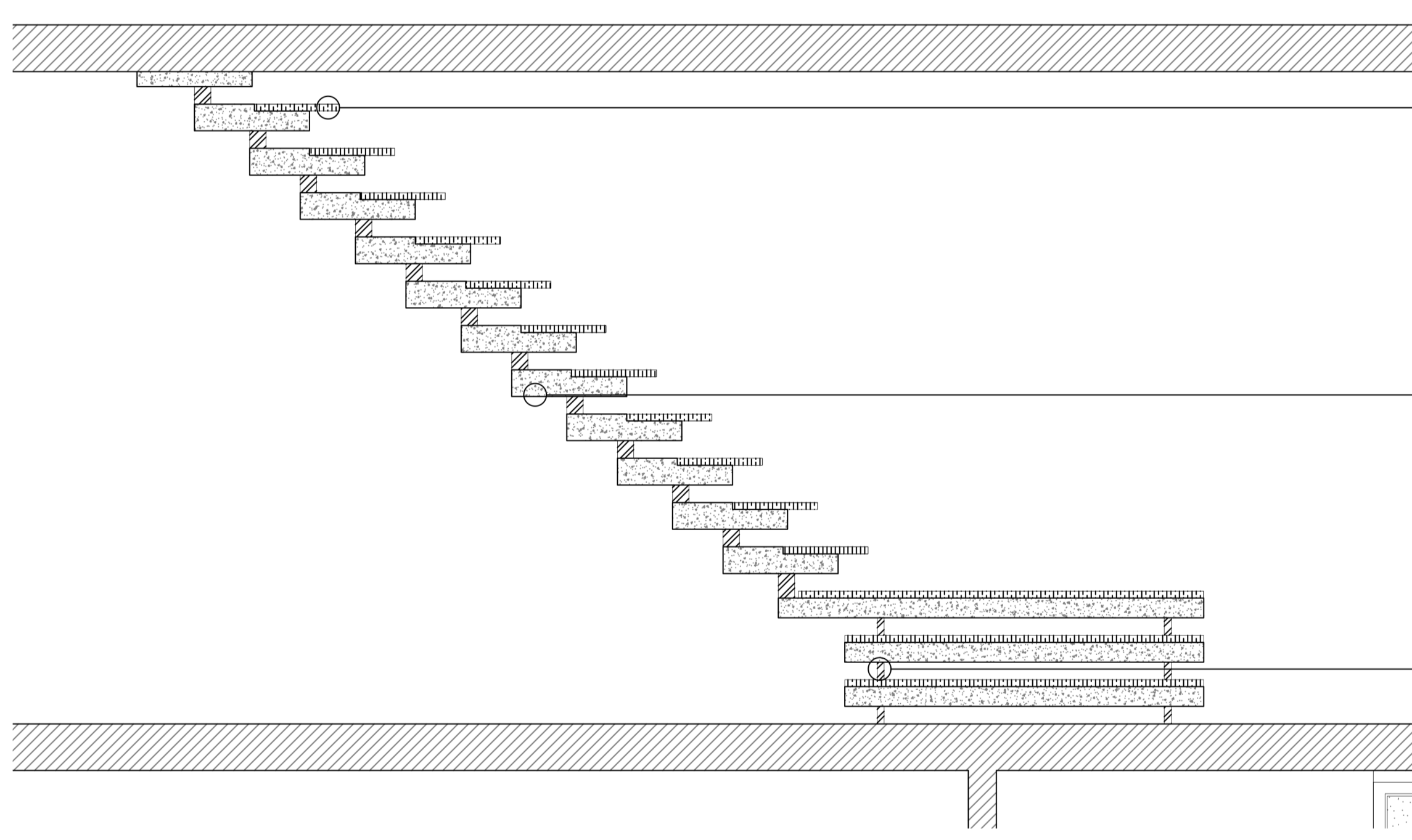
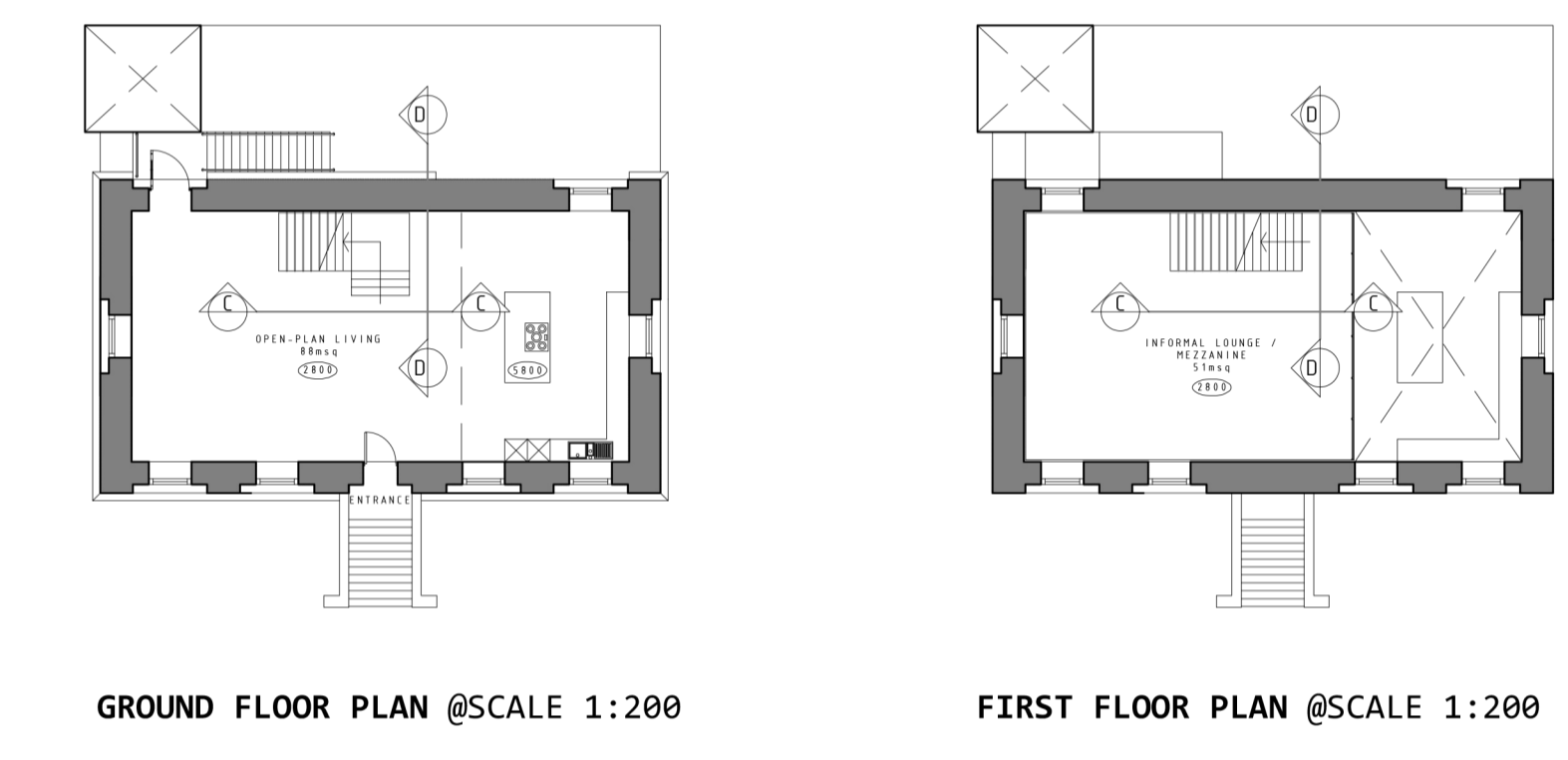
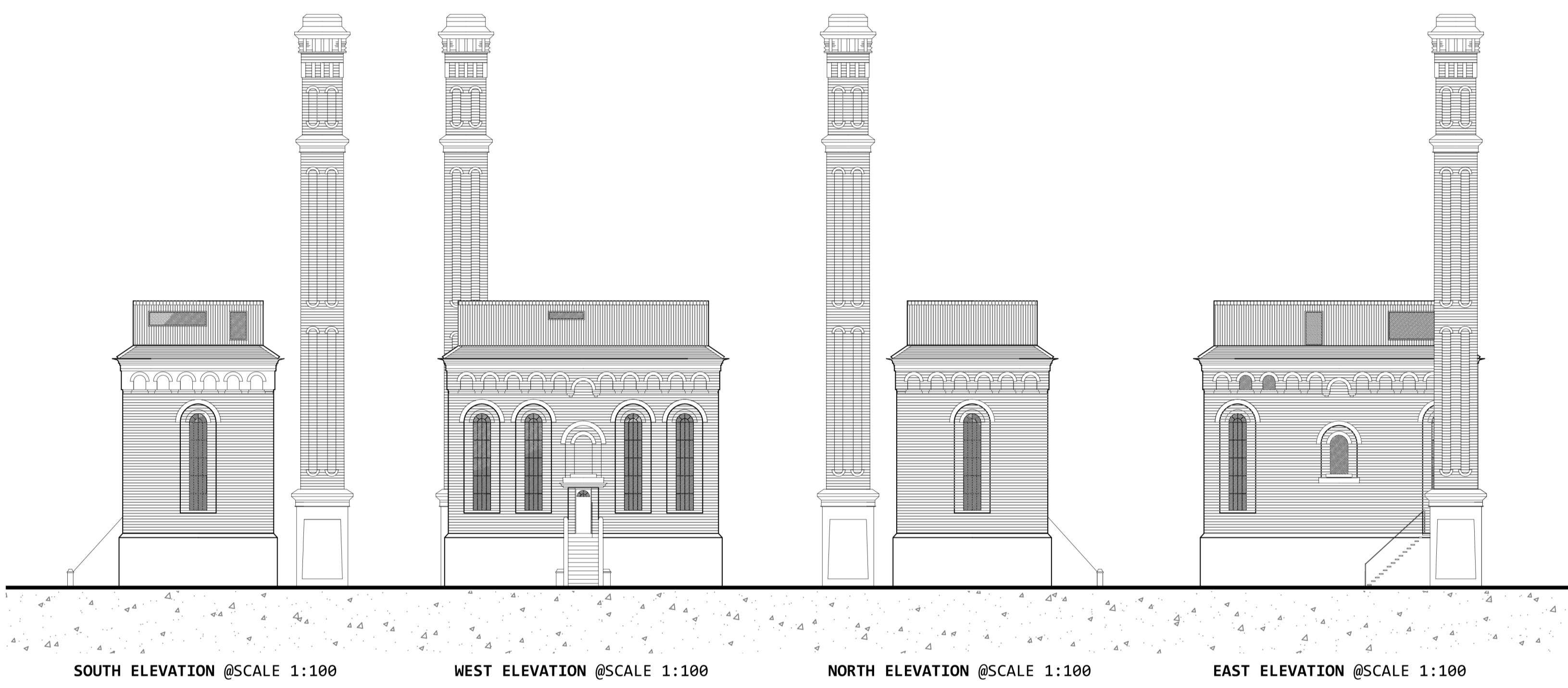
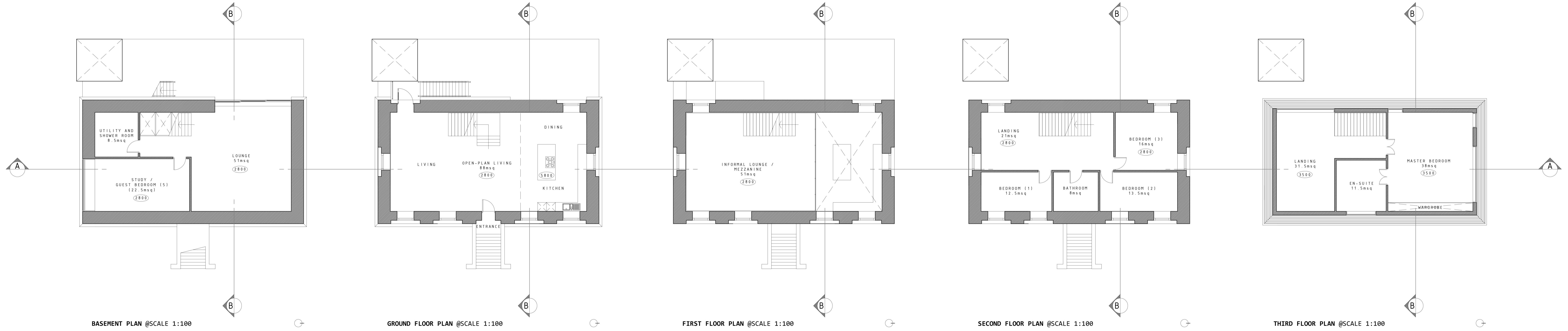


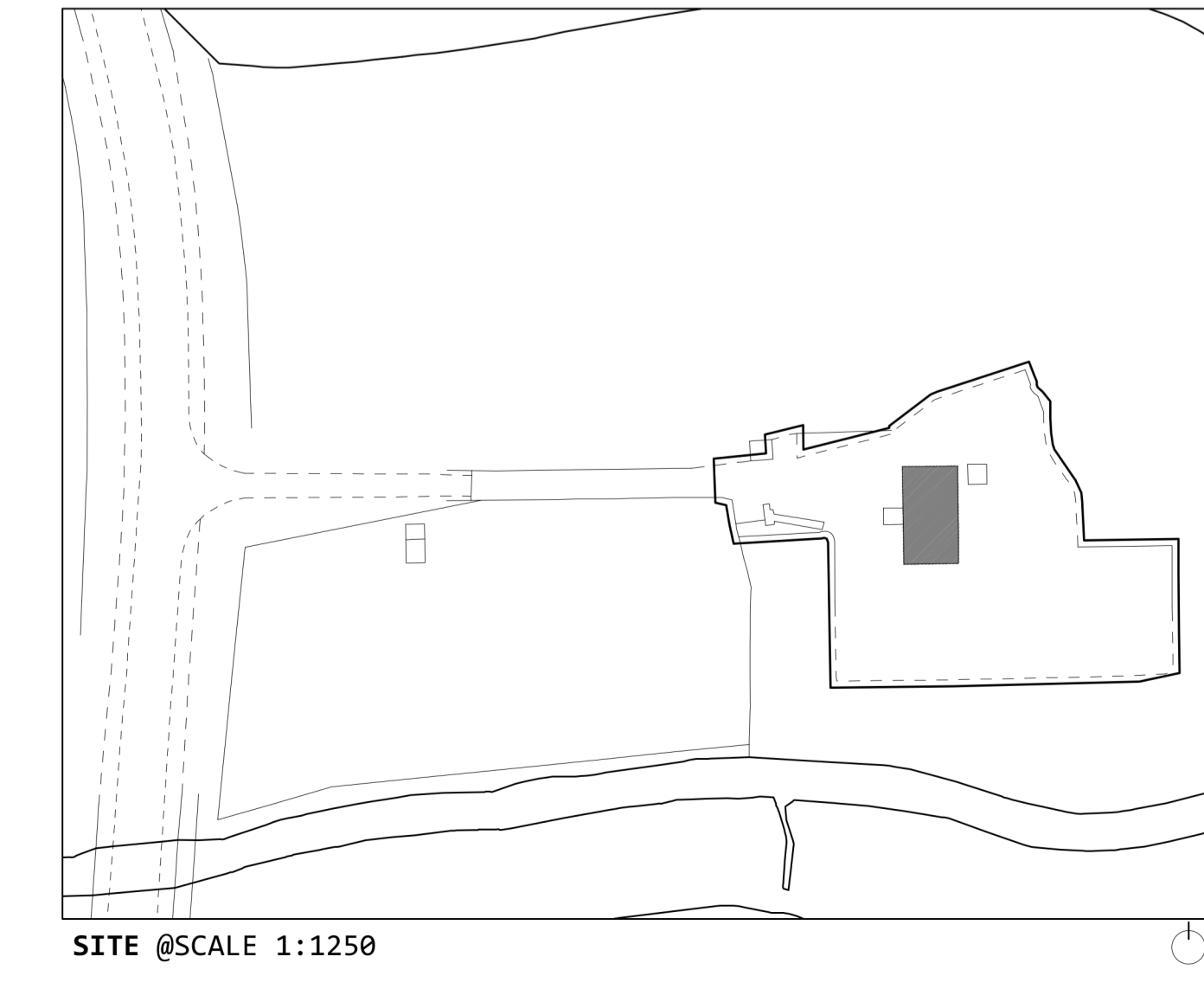
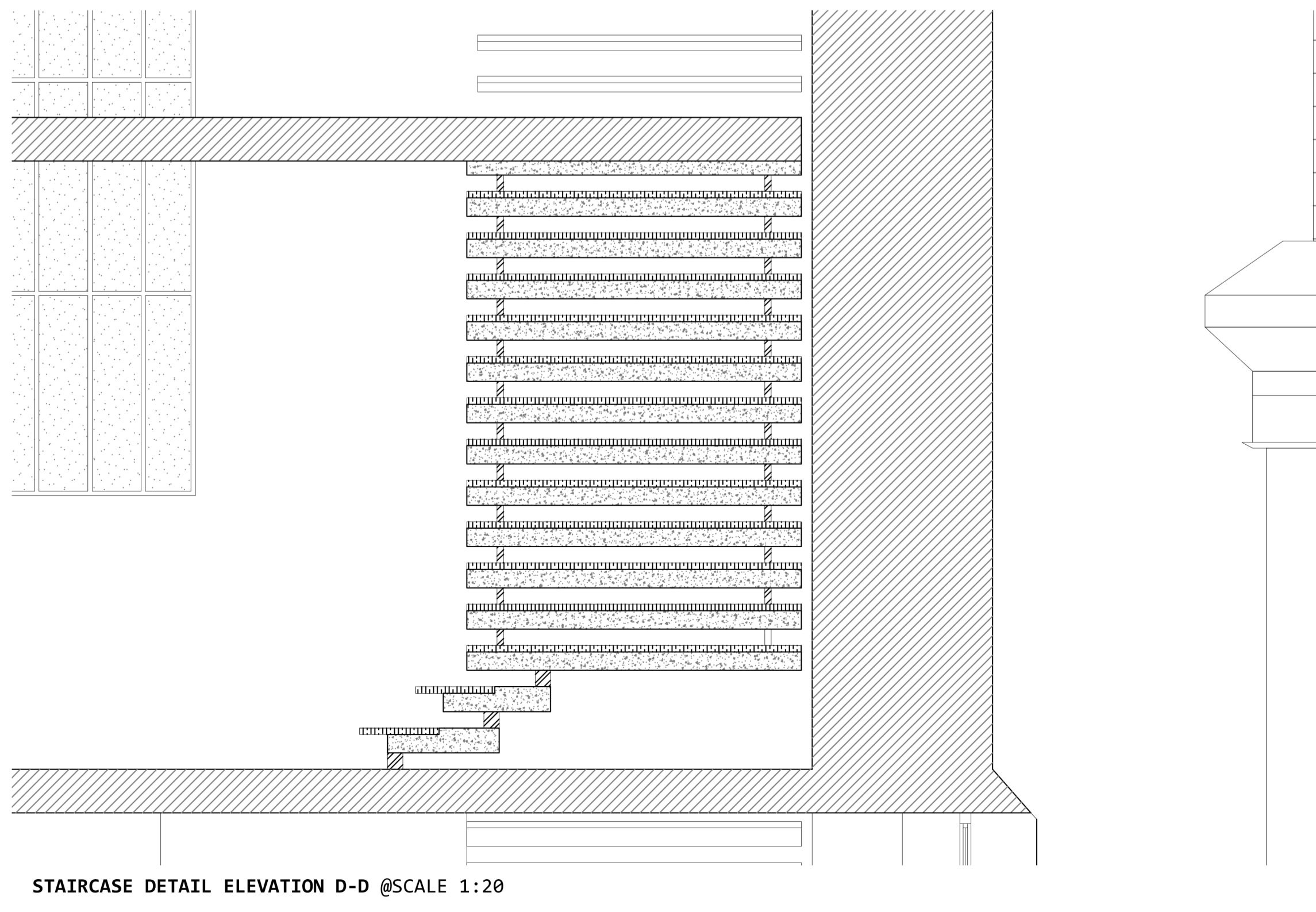
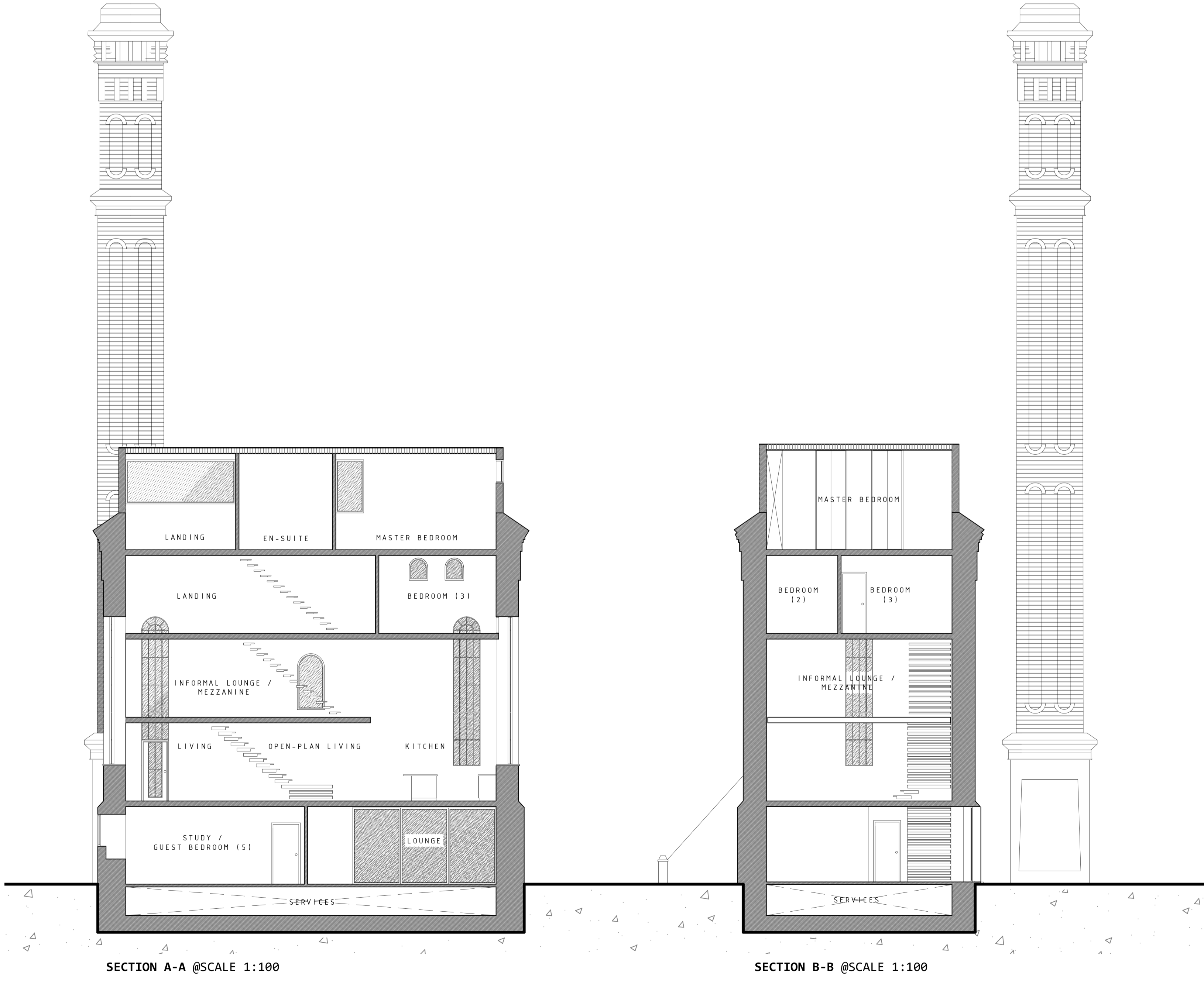
PROPOSED FLOOR PLANS, SECTIONS & ELEVATIONS @SCALE 1:20, 1:100, 1:200 & 1:1250



**RICH POLISHED DARK WOOD**  
MATERIAL COMPLIMENTS THE WARMTH OF THE TRADITIONAL BRICK STRUCTURE AND THE GENEROUS LIGHT FLOODING IN FROM THE FULL HEIGHT CRITALL WINDOWS

**POLISHED TEXTURED CONCRETE**  
INTERESTING TEXTURE AND INDUSTRIAL APPEARANCE OF THE MATERIAL JUXTAPOSES THE LIGHT APPEARANCE OF THE "FLOATING" STAIRCASE MAKES THE STAIRCASE A BEAUTIFUL AND EYE CATCHING CENTERPIECE

**ELEGANT STEEL STRUCTURE**  
LIGHT WEIGHT, YET STRONG STRUCTURE ENABLES THE STAIRCASE TO HAVE A FLOATING APPEARANCE



REVISION: A	DATE: 29.03.15
WILLIAM J. LINNELL N0338129 DESIGN COMMUNICATION	
PROJECT: STAIR PROJECT Bracebridge Pumping Station Nottinghamshire, S80 2DW	
DRAWING: PROPOSED PLANS, SECTIONS ...	
DRAWN BY: WJL	
SCALE: 1:20, 1:100, 1:200 & 1:1250 @ A0	
DRAWING NO.: A2.A	

DO NOT SCALE FROM THIS DRAWING DEK ALL MEASUREMENTS ON SITE